



1450 N. Milford Road, Highland, MI 48357-4560 • Phone: 248-887-4111 • Fax: 248-887-4768 xwww.numatics.com

Date: June 20, 2003 Number: RPGB-0005  
To: All Numatics Offices, Distributors and Sales Personnel  
From: Numatics Rodless Group  
Product: G Series Rodless Cylinder Locking Unit

Numatics is pleased to announce the introduction of a Locking Unit for the G Series Rodless Cylinders.

Operation

This is a spring to hold and air to release locking unit. After the cylinder has achieved the desired position exhaust the air release signal and the locking force will be applied. If a greater locking force is required an air assist supply may be applied to the unit.

Holding Forces

Bore size	Spring Force Only	Spring plus Air Supply Force
25 and 32mm	90 lbs / 400 N	225 lbs/1000 N @87PSI/6 bar
40 and 50 mm	135 lbs / 600 N	337 lbs/1500 N @87PSI/6 bar

Note: To connect the air signal for additional holding force remove the factory installed vent/filter plug and replace with a holding pressure supply. The holding pressure supply should be present only when the unit is in the desired position and the release signal is exhausted.

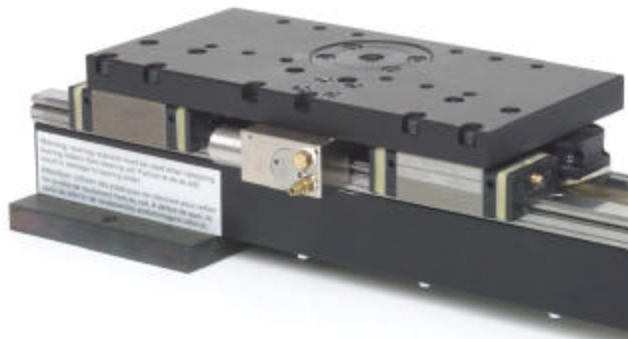
Installation

Locking units are factory installed and utilize the G1 or G2 Series Long Carriage. The locking unit is installed in place of the middle bearing slider. (Long carriages come standard with three bearing sliders per bearing rail) The moment ratings will be identical to those of the medium carriage.

Ordering Information

Select the appropriate bore size in the G1 or G2 Series Rodless Cylinder with a long carriage and insert one of the following suffixes in the 13<sup>th</sup> and 14<sup>th</sup> "Options" spaces.

- OL Locking Unit only
- ML Locking unit and Switch Magnets



P  
R  
O  
D  
U  
C  
T  
B  
U  
L  
L  
E  
T  
I  
N



**Dimensional Information**

**G Series with Static Locking Unit**

BORE	"H"	"W"	"E"
G125	3.24 (82.3)	5.12 (130.0)	.26 (6.7)
G132	3.56 (90.5)	5.12 (130.0)	.26 (6.7)
G140	4.55 (115.5)	8.46 (215.0)	.63 (16.0)
G150	5.36 (136.2)	8.46 (215.0)	.63 (16.0)
G225	3.240 (82.3)	5.51 (140.0)	.77 (19.5)
G232	3.56 (90.5)	5.51 (140.0)	.77 (19.5)
G240	4.55 (115.5)	8.46 (215.0)	.63 (16.0)
G250	5.36 (136.2)	8.46 (215.0)	.63 (16.0)

DIMS IN IN AND (MM)

LOCKING UNIT PART #'S:

25/32MM BORES = MKS1501A

40/50MM BORES = MKS2001A

HOLDING FORCE :

MKS1501A 90LBS (400N)  
PLUS CONNECTION UP TO 225LBS (1000N)

MKS2001A 135LBS (600N)  
PLUS CONNECTION UP TO 337LBS (1500N)

PLUS CONNECTION:

BY USE OF A 5/3 VALVE PLUS CONNECTION IS MADE BY REMOVING M5 FILTER AND REPLACING WITH SECOND CONNECTION

AIR REQUIREMENTS :

CLEAN LUBRICATED AIR SUPPLY  
OPENING PRESSURE 80PSI (5.5BAR)  
MAX. PRESSURE 87PSI (6 BAR)

NOTES :

LOCKING UNITS ARE A STATIC DEVICE NOT DYNAMIC  
LOCKING UNITS ARE NOT A LOAD BEARING UNIT  
WITH USE OF LOCKING UNIT LONG CARRIAGE  
CYLINDERS WILL HAVE MEDIUM CARRIAGE LOAD VALUES

